



# ORIGIN TECH GROUP

## CORPORATE PROFILE



ORIGIN  
GROUP

ENGINEERING DESIGN & CONSTRUCTION | AGRI-TECH & FOOD SYSTEMS | AUTOMOTIVE | TRADE & SUPPLY CHAIN MANAGEMENT





# **BUILDING A STRONG NEW FOUNDATION OF CONNECTIONS**

- Redefining Excellence
- Establishing Premium Connections
- Redefining the essences of HUMANITY and DIGNITY





# TABLE OF Contents

**01 COMPANY OVERVIEW**

**02 TIMELINES**

**03 VISION & MISSION**

**04 CORE VALUES**

**05 BOARD & MANAGEMENT TEAM**

**06 OUR COMPANIES**

**07 OUR SERVICES**

**08 OUR INVESTMENTS**

**09 PARTNERS AND CLIENTS**

**10 SUBSIDIARY PERCENTAGE OF GROUP'S OPERATIONS**

**11 WHY CHOOSE US**



# TIMELINES





# VISION & MISSION

---

## THE ORIGINAL VISION

To be one of the most efficient, innovative top-100 global companies with products and services that deliver happiness to our stakeholders.

---

## THE ORIGINAL MISSION

'To maximise available resources through creative ideas and innovative inventions to meet needs.



# OUR CORE VALUES

Our core values are rooted in what we believe is the foundation of excellence and success. These values are important to us, they inspire the way we work and do things at Origin. We believe that our embodiment of these values will go a long way in helping us achieve our vision.

---

## 01 Resilience

We are dreamers but we are not naive to think the road is easy: over 25 years iterating our business processes and strategies has taught us this. Though the road to scaling our ventures and building sustainable solutions across all our businesses may be tough, we maintain a Can-do Spirit.

For us being resilient means having determination, belief, and a willingness to fight to the end. This is what makes us stand out. We're not going to give up when the going gets tough or when we run into what seems like an indomitable challenge. We'll rise, face it head-on and come out victorious.

---

## 02 Speed

The world is moving at a fast pace, so are we. We believe it is not enough to be innovative. To consistently have an edge in the business world, we need to deliver our solutions with speed.

Our turnaround time for different processes continually decreases through the introduction of new technologies and novel processes. We encourage and actively reward Originals who create faster processes to achieve our organizational goals.

By being proactive and fast in our processes, we save time, reduce costs and improve our service delivery.

---

## 03 Resourcefulness

We maximize nature's finest resources: earth, fire, water, and air to build some of our nation's finest products.

Creative, innovative, out-of-the-box thinking is at the forefront of what we do and who we are. We maximize the power of tech and the internet to learn and find new ways to improve our businesses.

Our people are encouraged to use all resources available to man to make our customers the happiest and our stakeholders, the most satisfied.

---

## 04 Team Spirit

Team before self, people before person. Trust, respect, collaboration, transparency, empathy

- these are the building blocks of team spirit. Our work environment is passionately driven by in-person collaborations and teamwork.

Team spirit is crucial to us because the stronger the team, the stronger the company. Having a strong team spirit among our people boosts motivation and enables everyone to feel like a part of the team.

---

## 05 Integrity

Honesty truly is the best policy. Across our organizational hierarchy, we maintain openness in all our processes. We believe honesty is not a shackle to hold us back from creativity but rather a right platform to achieving our organizational goals.

We encourage ethical principles, keeping accurate records, speaking honestly and being transparent in all our dealings.



# Board of Directors



Prince SJ Samuel, M.Sc  
Group Chairman



Sir Kunle Claudius Ball  
Executive Vice-Chairman



Dr. Anthony O. Oboh, Ph.D.  
Director



Dr. Dahunsi Bamidele  
Ibukunolu, Ph.D.  
Director



Prof Ike-Elechi Ogba  
Director



Mr. Timothy  
Ade Ojeleye  
Director



Mrs Nana  
Fatima Mede  
Director



Engr Aminu Jalal  
FNSE, FNIM, FNIMechE,  
FNAutoEI.  
Director





### **Prince S.J Samuel, M.Sc Group Chairman**

Prince SJ Samuel is a serial entrepreneur, published author and public speaker.

Prince SJ Samuel is a serial entrepreneur, published author and public speaker.

He is the founder and Chairman, board of directors of Origin Group, an Agricultural value-chain enterprise with business interests in 4 continents. With experience spanning over 20 years as a top business and economic player, he works with a wide network of associates in adding value to the lives of people.

Prince Samuel has been involved in various aspects of Africa's agricultural value chain for over 2 decades. He serves as the president, League of Nigerian Professionals in China and is also a member of the Nigerian-German Chamber of Commerce.

He holds a first-class degree in divinity and philosophy from the World Bible School U.S.A. He also has a master's degree in Chinese history from Beijing Marman University. He also has an M.Sc in Divinity and a certificate in Chinese Language from Shanghai Foreign Language University.

He is also a prolific speaker, teacher, and multi-linguist.



### **Sir Kunle Claudius Ball Executive Vice-Chairman**

Sir Claudius Olakunle Ball is responsible for providing management guidance to heads of business units within the Group. He works to ensure policy implementation and compliance across the organizational hierarchy.

Before joining Origin Tech Group, he spent over 4 decades in the Nigerian banking industry. All his working experience was with Union Bank Nigeria where he rose to be a General Manager before retiring meritoriously. As the Special assistant to the Group Chief Executive Officer, he was a key member of the bank's transformation team in the year 2000 after which he supervised the bank operations in all the branches across Lagos Island, Lagos Mainland, and Abuja at different times.

He holds a Bachelor of Science degree from Olabisi Onabanjo University (formerly Ogun State University). He is also certified by the Institute of Bankers, London. Olakunle is an honorary Senior Member of the Chartered Institute of Bankers of Nigeria (HCIB) and associate member, Institute of Credit Administration of Nigeria.





**Dr. Anthony O. Oboh, Ph.D.**  
**Director**

An experienced researcher, marketer, and consultant with almost four decades of professional practice. Formerly head of Consultancy & Engineering Service Division of Raw Materials Research & Development Council (RMRDC). He was a 1989 Federal Ministry of Science and Technology Nigerian National Innovator/Inventor of the Year prize winner and also a 1994 award recipient of the Rockefeller Foundation's Leadership program. He has vast experience in He is a fellow of the Rockefeller Foundation's Leadership for Environment and Development (LEAD)



**Dr. Dahunsi Bamidele  
Ibukunolu, Ph.D.**  
**Director**

An accomplished lecturer and researcher with several professional awards/recognitions to his credit. A product of Obafemi Awolowo University and the prestigious University of Ibadan with over two decades of professional experience. He is a Research Fellow at the University of Wisconsin, Madison, USA and the University of the West of England. His wealth of Knowledge in his career has earned him a membership of learned societies such as the Nigerian Society of Engineers, Nigerian Institution of Agricultural Engineers, American Society of Civil Engineers, amongst others.



**Prof Ike-Elechi Ogba**  
**Director**

Ike-Elechi Ogba is a Professor of Marketing with expertise in Consumer and Organizational Behavior/Commitment an area in which he holds his PhD and MBA from Newcastle Business School, Northumbria University (UK) and a Postgraduate Certificate from Ecole Supérieure de Commerce de Lille. (ESC) Graduate School of Management, EuraLille-France. He is a member of various professional bodies, including the Chartered Institute of Marketing London and Chartered Management Institute UK. His academic, Industrial, managerial, teaching, and research experience span over 19 years. Some of which were within the UK Financial Sector, including Northern Rock Bank Gosforth HQ, UK. He is also a Board Member and Director of various multinational and International organizations and corporations. He is the Executive Chairman of Parker and Chele Limited; Lotanna Farms and LongBridge. He is also a Public Speaker in national and international conferences including the EDVEST Educational Catalyst Conference Lagos with over 4000 Heads of Schools across Africa in attendance.



**Mr. Timothy Ade Ojeleye**  
**Director**

An astute Accountant of international repute whose professional career has taken through the employment of Nestle Foods Plc (formerly Specialties' Nigeria Limited) with almost four decades of fruitful and notable professional career. He was the first Nigerian to be appointed as Managing Director of Steyr Nigeria Limited. He is a corporate turn-around expert with proven and verifiable records that turned the tide in favour of Steyr Nigeria Limited within the first three years of becoming the Managing Director. He is presently involved in providing sustainable solutions for dam construction, irrigation, and waste management.





**Mrs Nana Fatima Mede**  
**Director**

Mrs. Nana Fatima Mede is a Fellow of the Association of National Accountants of Nigeria (FNAN) and she also obtained a certificate in public financial management from John F Kennedy School of Government Harvard University USA as well as degrees in accounting from Alabama A&M University, USA. Mrs. Nana a retired Permanent Secretary in Benue State and the Federal civil service is presently the managing partner of Carter Consulting Limited and the Founder and Director at Baba Rabi foundation, Edo state. Some of her notable achievements while in government service include her role as project sponsor concerning federal capital project expenditure in Nigeria and also a project in the implementation of integrated personnel payroll for the bureau of public sector reform (BPSR) as a national coordinator. She has attended several professional courses in Nigeria, the UK, and the united states of America including but not limited to planning programs and projects by crown agent, London, positive leadership at the Ross School of Business, University of Michigan USA, ITIL & IT project management organized by silicon beach training, UK.



**Engr Aminu Jalal**  
**FNSE, FNIM, FNIMechE, FNAutoEI**  
**Director**

He is a mechanical engineer with over 37 years of experience in engineering, teaching, consultancy and management. He is a Fellow of several professional institutions: Nigerian Society of Engineers (FNSE) Fellow, Nigerian Automotive Engineer's Institute (FNAutoEI) Fellow, Nigerian Institution of Mechanical Engineers (FNImec) Fellow, Nigerian Institute of Management (FNIM) Member, Society for Automotive Engineers (SAE), Member, American Society of Mechanical Engineers (ASME) Associate Member, Nigerian Computer Society (NCS). He is a seasoned automotive engineer; He managed the Nigeria automotive council for over 10 years as the Director-General.

# THE MANAGEMENT



**PRINCE S.J. SAMUEL, M.Sc**  
**Executive Chairman**

Prince Samuel is a seasoned entrepreneur, author, and public speaker with over 20 years of experience in business and economics. As the founder and executive Chairman of Origin Tech Group, he has driven the company's growth across the agricultural value chain on four continents. He also serves as president of the League of Nigerian Professionals in China and is a member of the Nigerian-German Chamber of Commerce. He holds degrees in divinity, philosophy, and Chinese history, and is fluent in multiple languages.



**SIR KUNLE CLAUDIUS BALL**  
**Executive Vice Chairman**

Sir Ball brings over 40 years of banking experience to Origin Tech Group, having held senior roles at Union Bank Nigeria. As Executive Vice-Chairman, he ensures smooth policy implementation and compliance within the company. He holds a Bachelor of Science degree from Olabisi Onabanjo University and is an honorary Senior Member of the Chartered Institute of Bankers of Nigeria.



**OLUSESAN AYENI**  
**Executive Director, Corporate Services**

With over 20 years in agriculture and construction, Olusesan Ayeni provides strategic leadership at Origin Tech Group. His expertise in large-scale project development and focus on sustainable agriculture and food security play a key role in driving the company's operations and partnerships.



# THE MANAGEMENT



**TEMI NELSON**

**Executive Director, Investments & Finance**

Temi Nelson has led major financial and operational transformations across various sectors. Her expertise spans business development, risk management, and financial modelling. Prior to joining Origin Tech Group, she held senior leadership roles at Electronic Pay Plus Ltd, Neimeth International Pharmaceuticals Plc, and Shell Petroleum. She holds an LL.M in International Commercial Law and is a member of several professional organizations, including ISACA, CFA, and WIMBIZ.



**BOSUN OLUWAGBEMIGA OSOSANYA**

**Executive Director, Investment Risk & Debt Management**

Bosun Ososanya is a consummate professional with core experiences covering risk management, accountancy and banking and finance. He holds a Master of Science in Banking and Finance from the prestigious University of Ibadan and an Associate Membership of the Risk Management Association of Nigeria (RIMAN).

Prior to joining Origin Tech Group, he was the Head, Credit Risk Management for Unity Bank Plc with supervisory role over the entire bank's twelve (12) regions across the country. Hitherto, he had had stints with Pharma Deko Plc and Dunlop Nigeria Plc respectively.



**SAM IYANDA**

**Chief Financial Officer**

A Chartered Accountant and Tax administrator; Sam has a combined 42 years of professional experience covering accounting, banking, audit, tax and management consulting practice.

Iyanda holds an MBA degree in Finance from the Lagos State University and is a Fellow of the Institute of Chartered Accountants of Nigeria (ICAN) and Chartered Institute of Taxation of Nigeria (CITN) and an Associate member of Nigerian Institute of Management (NIM).

Prior joining Origin, his robust professional trajectory at various C-Suite positions covered First Bank of Nigeria, FBN Bank RDC, Fidelity Union Merchant Bank Limited; Ivory Merchant Bank Limited and MBC International Limited and KPMG where he honed his professional skills and later qualification as a Chartered Accountant.



**“Our drive to provide value across the agricultural value-chain empowers us to deliver creative and innovative solutions to our stakeholders.”**





# OUR COMPANIES



Rhema  
Project  
BCEGI



ORIGIN  
AUTOMOBILE  
WORKS



ORIGIN  
FURNITURE



TRACTOR ON THE GO



SENSALE



agricrops



ORIGIN  
TRADING



Origin  
Agrifoods  
Limited





ORIGIN  
AUTOMOBILE  
WORKS

---

# ORIGIN AUTOMOBILE WORKS

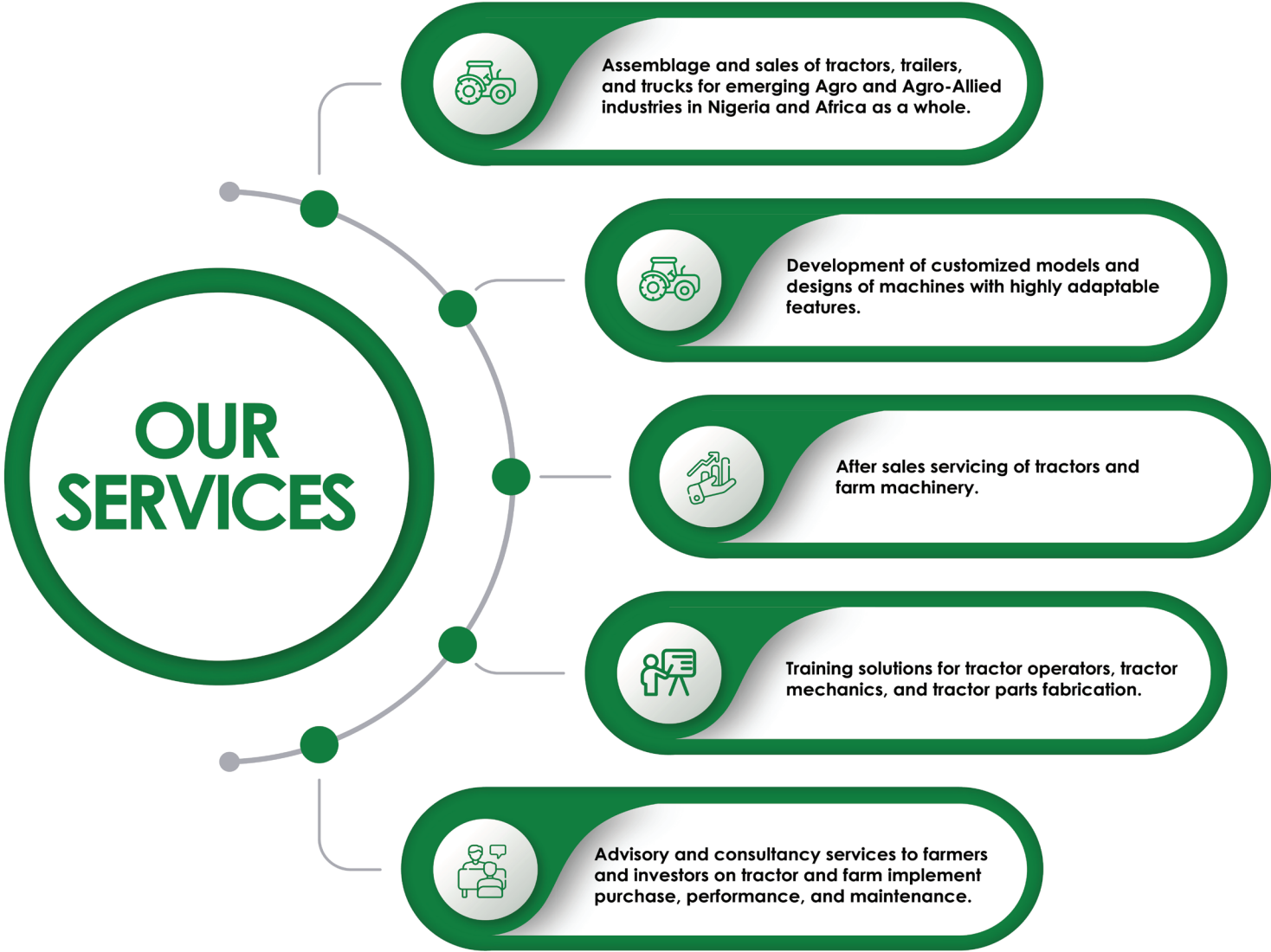
---

[www.oaw.ng](http://www.oaw.ng)





**Origin Automobile Work (OAW)** is incorporated in Nigeria under the provision of the Company & Allied Matter Act (1990) as a major player in the assemblage and sales of tractors, trailers, and trucks for emerging Agro and Allied industries in Nigeria and sub-Saharan Africa. OAW provides advanced mechanization technology to eliminate the high human drudgery prevalent in the Nigerian farming industry. We provide farmers with easy access to heavy machineries, tractors, and farm implements. We are adopting modern technology to suit our people's basic needs and pocket size. We believe only home-grown innovation holds the ace for Africa's growth and sustainable development.





# OUR PROJECTS

## The Niger State Food Security and Agro Mechanisation Project:

The Niger State Food Security and Agro-Mechanisation project, in collaboration with Origin Tech Group, is a transformative agricultural initiative led by Governor Mohammed Umar Bago, the project aligns with the National Food Systems initiative spearheaded by Origin Tech Group, positioning Niger State as a leader in food production and livestock processing. The project aims to mechanize over one million hectares of arable land, establishing Niger State as a key hub for agricultural and livestock value-chain processing. Origin Tech Group will provide cutting-edge agricultural equipment of over 1,000 tractors, and harvesters, technical expertise, and capacity development for the beneficiaries of the projects in areas of skills development to drive effective manpower delivery. This large-scale mechanization will boost productivity, create employment,







**SURULERE ASSEMBLY PLANT**



**TRACTOR ASSEMBLING**



**SURULERE ASSEMBLY PLANT**



**OAW Supplied tractor at work at a farm in Ejiba.**





“

**Our drive** to provide value across the agricultural value-chain empowers us to deliver creative and innovative solutions to our stakeholders.

”





## Tractor On The Go

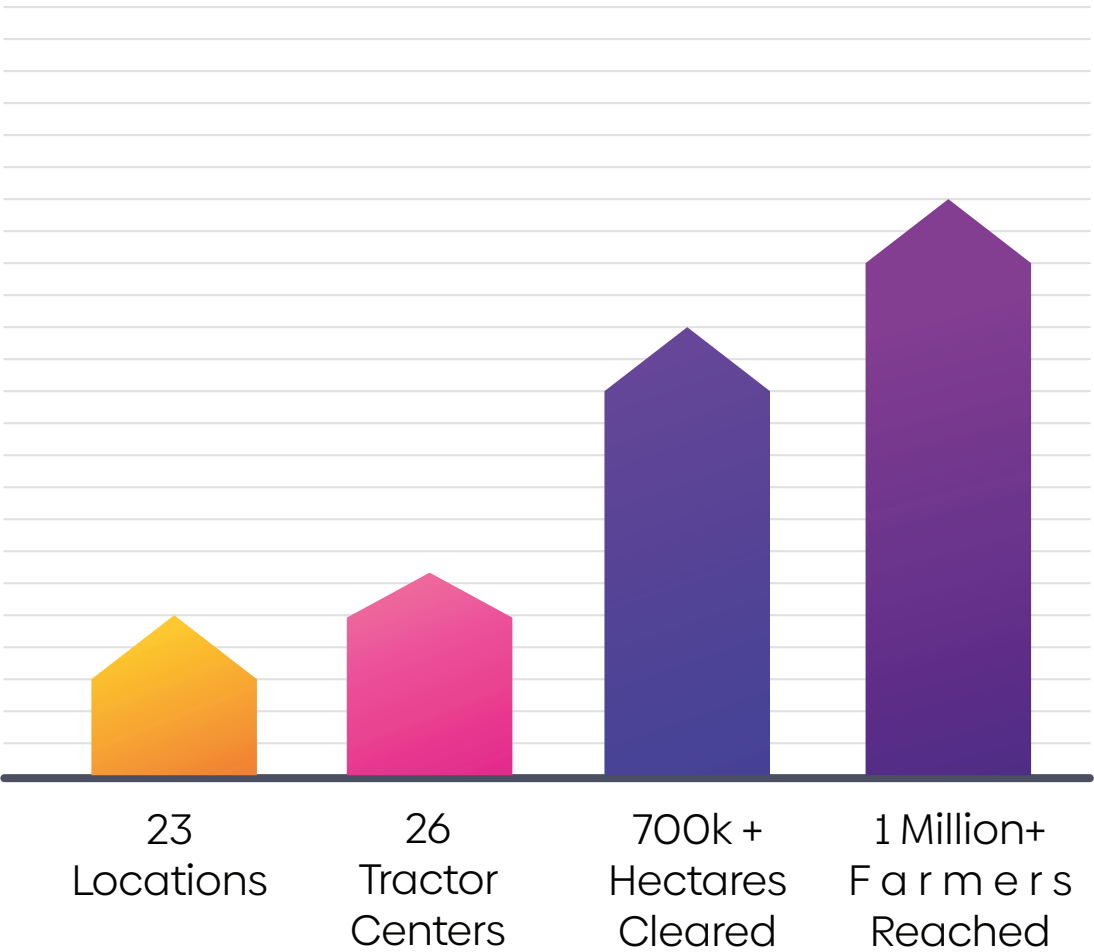
TOG is a tractor hailing app with value-added services. The TOG app is a simple solution, made with care, tech, and innovation to solve Nigerian farmers' mechanization problems.



From plowing to harvesting, TOG supplies all the equipment farmers need for speedy and more convenient farming operations, at the best price. All over Nigeria, farmers can order a tractor and other farm mechanization implements for any stage of their farm process cycle through the TOG app.



# Statistics



We have tractor centers across 23 states furnished with tractors, farm implements, and farming agents to help onboard farmers on the TOG app. These centers are equipped to bring farm mechanization closer to farm clusters of 500 hectares.

These cluster communities enjoy a dedicated support staff to help them navigate the app and operate the farm machinery.



## **A model tractor center contains**

**1**  
10  
Tractors

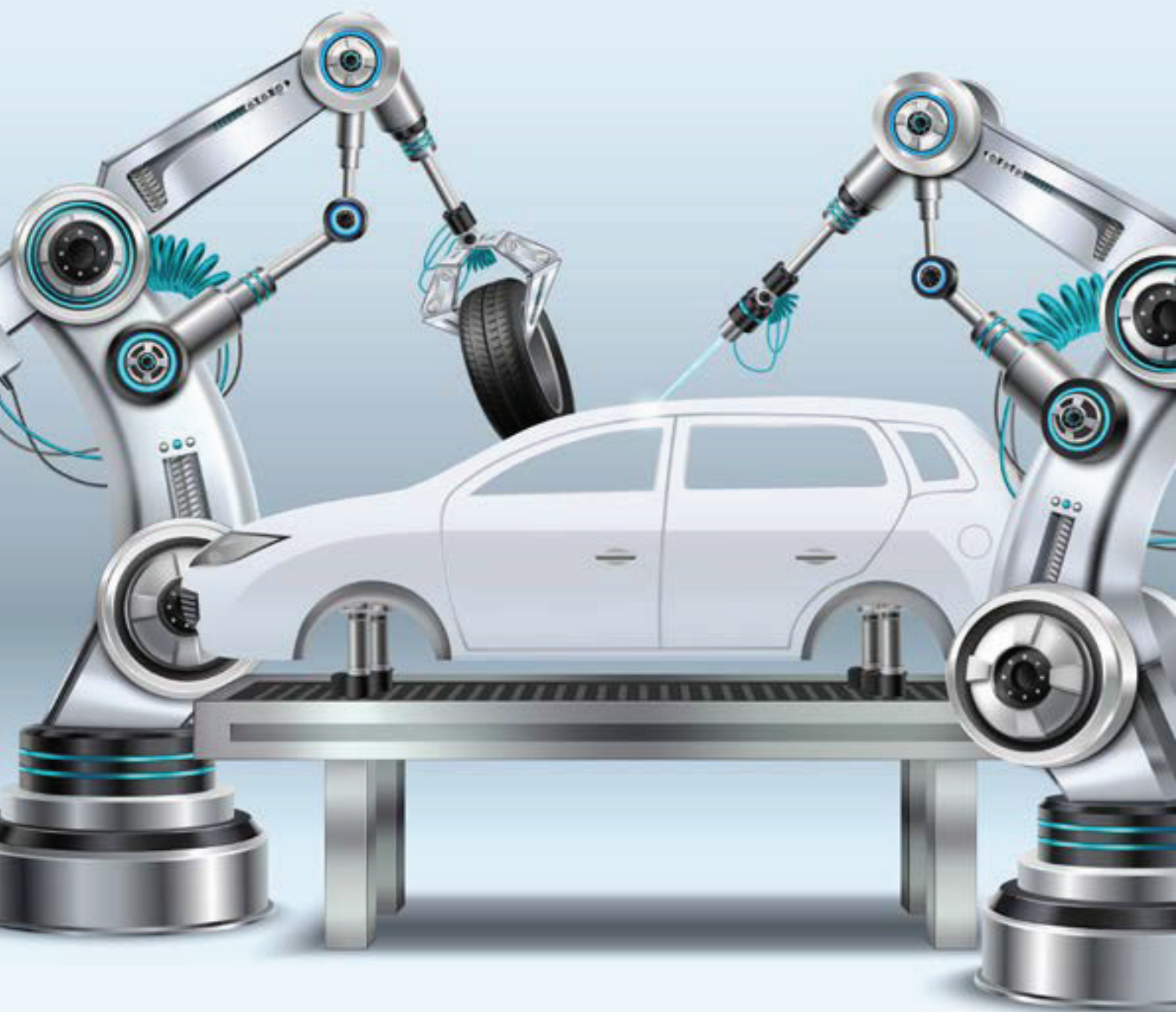
**2**  
20  
Imple-  
ments

**3**  
1  
Har-  
vester

**4**  
4  
Tipping  
trailers

**5**  
TOG  
sign-  
post

**6**  
Gener-  
ator  
Set



## Duka Automotive

Duka is a 21st-century vehicle manufacturing company. Our vehicle assembly plant is equipped with advanced technology to produce high-quality vehicles built to last.



In partnership with established world-leading manufacturing companies, Duka has access to some of the world's best car assembly technology and car assembly experts from around the world. Duka exists to address the intra-city transportation problems in Nigerian Urban centers with high-quality vehicles. We plan to open new possibilities for motoring for Nigerians with innovation suited for the needs of the average Nigerian driver.



# Our Strengths

01

Experienced  
Personnel

02

Quality  
Assembly

# Services

Assembly  
of automobile

After-sales  
Maintenance

Automobile  
Consultancy

Procurement,  
Modification,  
upgrade of  
automobiles

## The First and Last Mile Project



## The First and Last Mile Project

In recognition of the acute need for an efficient, affordable, and accessible commuter bus transportation system with cutting-edge technology, DUKA Automotive took the giant strides towards economic viability that lies in this sector.



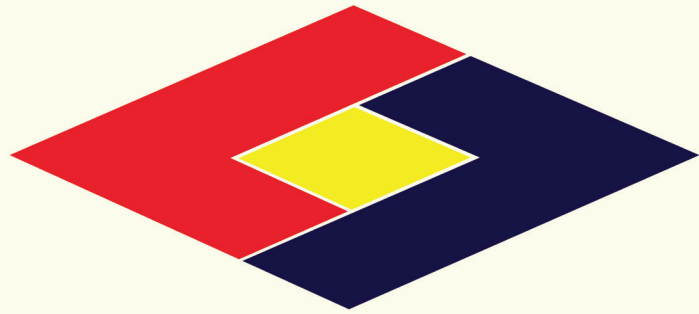
Through the dynamic leadership and innovative ideas of our professional, young and vibrant engineering team, DUKA was able to manufacture a series of custom-designed Origin X30 buses also known as the first and last-mile buses, engineered to deliver optimum user experience, ply inner roads and take commuters to their first and last destination in and around Lagos metropolis.

This project tells the story of hope, ingenuity, and gritty determination as the pandemic was at its peak when it commenced. The project required the quick conversion of our tractor assembly plant into a vehicle assembly plant. This was done within six months and has produced its first set of 1000 vehicles with a 1.5 liter engine, the latest technology, low-carbon emission, low fuel consumption, and laudable masterpieces of logistics.









Rhema  
Project  
BCEGI

# RHEMA PROJECT BCEGI

[www.rhemaprojectng.com](http://www.rhemaprojectng.com)





**Rhema Project BCEGI Company Limited** is a limited liability company that provides bespoke infrastructural development services, incorporated in the year 2001.

The indigenous company formed a joint venture with Beijing Construction and Engineering Group International of China, a group with vested interests in infrastructural development, property development, and engineering design.



**100+**  
MEGA  
PROJECTS



**25+**  
YEARS  
IN BUSINESS



**2**  
OFFICE  
LOCATIONS



**117**  
STAFF  
STRENGTH





# OUR PROJECTS

## The Lagos Central Security Systems and Logistics Hub

The Lagos Food Security System and Logistics Hub (LHP) is a transformative project initiated by the Lagos State Government with its 5-Year Agricultural Roadmap and presently been developed by Origin Tech Group through one of our companies Rhema Project BCEGI. Launched in August 2022, the hub which is designed to ensure the efficient storage, processing, and distribution of both dry and fresh goods to stabilise food prices and improve supply chains across Lagos aims to significantly boost the state's food self-sufficiency, increasing it from 18% to 40%.

The hub boasts of state-of-the-art facilities, including administrative offices, wholesale markets, Nigeria's largest dry storage warehouse, cold storage for perishables, and an abattoir capable of processing 4,000 cows daily. It will also feature environmentally friendly infrastructure like a wastewater treatment plant.

Origin Tech Group has been a driving force behind the hub, providing innovative, locally tailored solutions to revolutionise the food system. Their expertise not only supports the vision for Lagos but is also





# OUR PROJECTS

## Auto Service Centre

- To design an ultra-modern and efficient Auto service building
  - To undertake the safe keeping, cleaning, repairing, painting, furnishing, body building, refueling, and servicing of motor vehicles of all kinds
  - The project is a mix of Auto service and Auto assembly function.
- This project through the expertise of Origin Tech Group plays a critical role in ensuring food security, reducing post-harvest losses, and fostering economic growth in Lagos and beyond.





# OUR PROJECTS

## Mid-Level Market Initiative – Bringing Agriculture Closer to the People

Origin Tech Group's Mid-Level Market initiative is an innovative solution aimed at transforming food accessibility and affordability in Lagos State. By establishing strategically located Agro-hubs, this initiative directly connects consumers to fresh farm produce at fair prices, cutting out the middlemen and enabling farmers to earn more for their efforts.

Launched in collaboration with the Lagos State Government, these hubs serve as well-organized centers for sourcing fresh vegetables, fruits, tubers, meat, and other essential food items from local farms. The first of these markets opened in Mushin and has already sparked discussions about its potential to enhance food security, stabilize prices, and offer Lagosians fresher and more affordable produce.

The initiative showcases Origin Tech Group's commitment to solving critical food distribution challenges in the Agri-tech space by creating a seamless link between rural farmers and urban consumers. Through this network, farmers benefit from improved profitability, and consumers access a wide range of locally sourced, fresh produce in well-organized, supermarket-style settings.

With plans to expand to 50 locations across Lagos State, the Mid-Level Market initiative is poised to revolutionise the agricultural value chain and elevate food supply systems in Nigeria.







## Origin Furniture

Origin furniture is a sub-Saharan furniture solutions company offering custom-built furniture for homes, schools, offices, and auditorium.



As a wholly homegrown furniture company, we have developed bespoke approaches to delivering value to our local clients and we are taking advantage of globalization to maximize our competitive advantage. Africa, and in particular Nigeria, is blessed with abundant forest resources in high demand around the world.

From inception, we have to add value by being “very real in our designs and place users’ culture and preference first”. Origin Furniture’s production facility is highly equipped with modern machinery with fully automated lines to enable large-scale production.



## Vision

“To become the No 1 furniture manufacturer in Africa within 5 years.

## Mission

“Making Africa self-sufficient in furniture design and production.







## Clients

- Bank of Industry
- Ministry of Works, Lagos State.
- Public Works
- Ministry of Agriculture
- Ministry of Wealth Creation
- Ministry of Justice
- Special Committee for Rehabilitation of Primary Schools (SCRPS)
- Mountain Top University
- Ministry of Special Duties
- Architouch Ventures



**“ We want to bring happiness to all our stakeholders by creating the most profitable and efficient products and services. ”**







## Landcraft



Landcraft Limited has an objective of providing farmers with a one-stop-shop for all services related to the preparation of agricultural land for farming including Surveying, Mapping, Field Design, Land Leveling, and more. Irrespective of the land size or extent of your farming operation, Landcraft provides expert solutions to serve all your needs. The promoters of the company have been involved in agriculture for over 2 decades and have developed expertise in the industry.





#### Land Preparation

We help with the clearing and preparation of dense forests, semi-forests, and other farmland.

#### Equipment

We provide sales & hiring services of modern agricultural equipment to farmers and landowners.

#### Site Design

We will provide site analysis and a conceptual site layout of your land, based on your farming goals.

#### Grading & Leveling

We will give that expert grading providing the basis for foundations, drainage & landscape features

#### Custom Farming

We will handle all your farm operations professionally.

#### Technical Consultancy

We leverage our experience and network to provide consultancy on all areas of farming.

#### Haulage

We help with the haulage of farm produce or equipment to desired locations.

#### Surveying & Mapping

With modern technology & decades of experience, accuracy is guaranteed.

#### Discing, Plowing, Ripping

Land preparation for farming is our specialty.



## Our Vision



“

To help increase Nigeria's tractor density by 400% within the next 3 years starting from 2021.

## Our Mission



“

To provide easy access to mechanized farming for every farmer.

## Our Values



Social  
responsibility

**Excellence in  
customer service**



Integrity

**Focus on customer  
satisfaction**



# Services and Businesses

## Our Services

Our services cover the entire agricultural value network from agric mechanization to processing and sales of agricultural produce.





## **Core Agriculture**

Investments  
Packaging  
Processing  
Agric Inputs  
Agric Mechanisation  
Farming  
Agric Advisory

## **Agricultural Automobiles**

Design Assembly  
Body Works  
Painting

## **Agro Trade**

Farm Inputs  
Supply

## **Agricultural Services**

Land Clearing  
Equipment Hiring  
Consultancy  
Machinery sales

## **Infrastructural Development**

Architectural  
Design  
Structural & Civil  
Engineering  
Construction  
Consultancy

## **Automobile Assembly**

Automobile  
Assembly



# Our Businesses

## **Agric Tech Investment**

5bn and above annual turnover



We understand how technology shapes the world we live in, this is why we have invested our time, efforts and resources in building agricultural infrastructures and systems that can power the future we want to see in the agro sector. Through our subsidiaries Tractor on the Go and Origin Automobile Works delivering services such as consultation, advisory, trade services, commodity trading and software for agricultural mechanization, we have impacted both our industry and the lives of everyday Nigerians.



## **Civil engineering services**

7bn and above turnover



For us, we believe immensely in building the future, our investments in food system development, agro civil engineering, market system transportation, advisory, infrastructural designs and construction enables use innovation, creativity and a wealth of knowledge, to change the world around us.

## **Automotive Services**

5bn and above annual turnover



In recognition of the acute need for efficient and affordable indigenous vehicles with cutting edge technology for Nigerians, we have made formidable contributions to the automobile industry. From manufacturing of military grade special automobiles to assembling, sales and maintenance of commercial and luxury vehicles, our subsidiaries: Origin Automobile Works and DUKA Automotive enables access to quality, low-cost solutions for people of varying socio-economic status. With services such as auto design, capacity development, and advisory, we prioritize information, knowledge and world-class standards in delivering value to our stakeholders.



# Our Investments

## Our Investments

Our current investments in agriculture are estimated at over \$100 million. We are currently developing over 40,000 hectares of farmland across Nigeria.



## Lagos

- 12.8 hectares for Cattle fattening farm
- Several hectares of crop (watermelon, tomato) farmland in Badagry
- Tomato processing, factory
- Tin canning factories
- Water bottling factory
- Tractor Assembly Plant
- Several tractors and bulldozers
- Greenhouses

## Ekiti State

- HQCF Processing facility in Orin-Ekiti.

## Abuja FCT

- Vegetable farm in Gundumavillage, FCT Abuja

## Bauchi

- Vegetable farm in Bauchi Rice farm Tomato processing factory in Bauchi

## Oyo State

- Tomato processing plant  
10,000 hectares cassava plantation in IbarapaNorth LGA of Oyo state

## Osun State (WIP)

- Tomato processing plant 60,000 Layers Poultry Farm

## Ogun State

- Tomato processing plant Tomato farm Maize farm



## Nationwide

- Tractor on the Go Service Centers

## Other Partnerships

### Institutions

- University of Agriculture, Abeokuta
- University of Ado Ekiti
- EkitiState University
- University of Ilorin
- National Horticulture Research Institute (NIHORT) Programs
- Outgrowers Schemes
- Development of Agro-preneurs
- Research and Development Partnerships





# Partners And Clients

## Federal Agencies



## Intelligence Agencies



## Government



## Others



**NIGER FOODS**





**10 billion and above  
(ongoing projects)**



**5 billion and above  
completed projects**



**FMARD**  
FEDERAL MINISTRY OF AGRICULTURE  
AND RURAL DEVELOPMENT

**2 billion and above  
completed projects**



**1 billion and above  
completed projects**



**CBN intervention;  
RIFAN, MAAN, ABP  
10 billion and above  
completed projects**



**60 billion and above  
(ongoing projects)**

# Our Partners



**CASE IH (Fortune 500 company)**

We are a global partner and sole Nigerian importer and dealer of CASE IH tractors and heavy machinery.





**北汽集团**  
**BAIC Group**

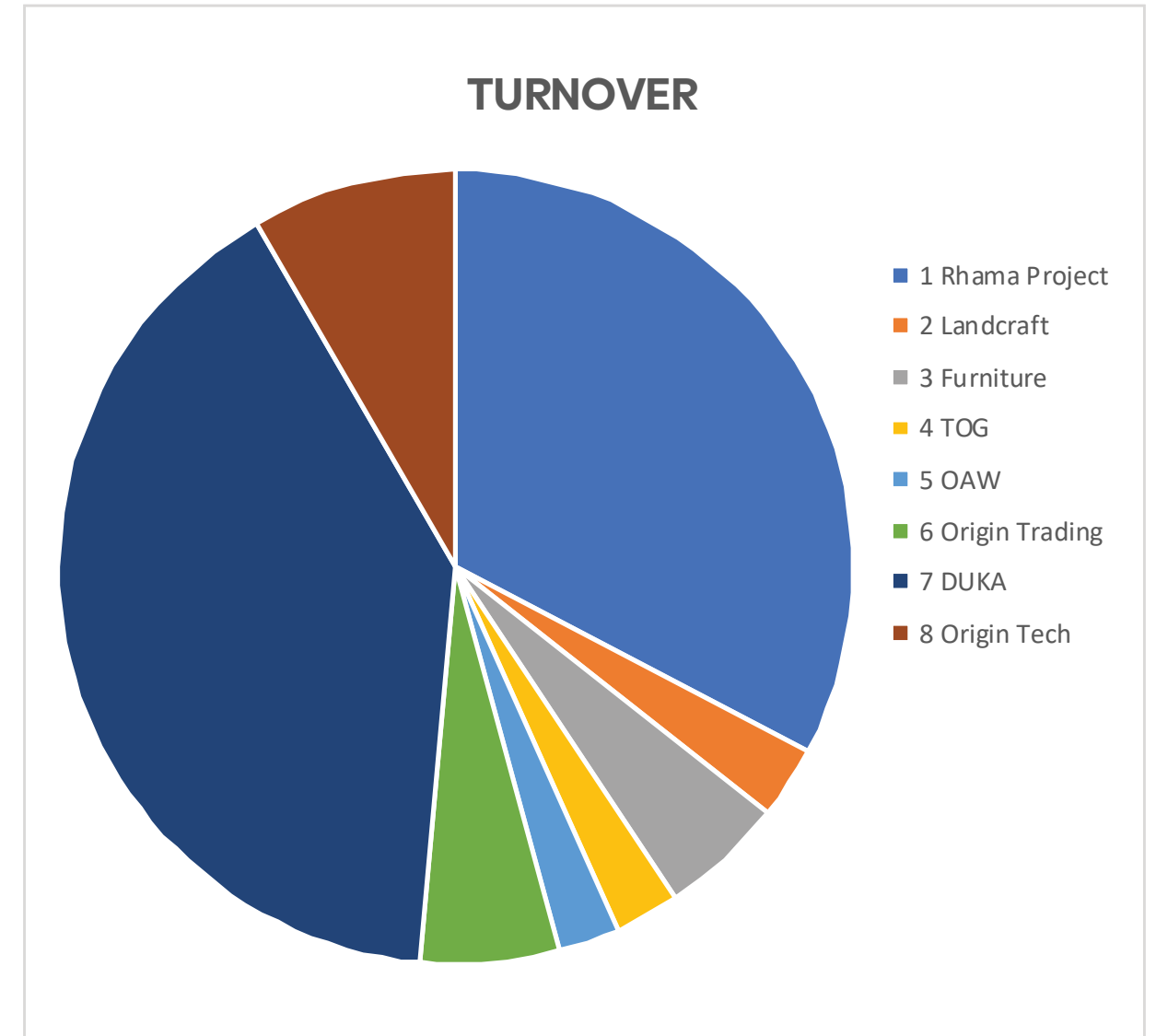


**Beijing Automotive Group Co., Ltd.**

We are the Country partner for Beijing Automotive Group for BAIC vehicles.



# Subsidiary Percentage of Group Operations





# Why Choose Us?

## Strong Research Capabilities

Continuous improvement is our watchword and we have developed the necessary relationships and infrastructure for research

## Over 40,000 ha of Farmland

We have the asset capacity to help fulfill your dreams

## Wide Network of Relationships

We have developed strong working partnerships with technical, financial and, other business partners

## Depth of Industry Experience

Our key personnel each have over 2 decades of experience in the industry.

## Innovative Financial Options

Our customers are diverse with varying needs. We partner with fellow leaders in the industry to deliver quality and affordable value to them all

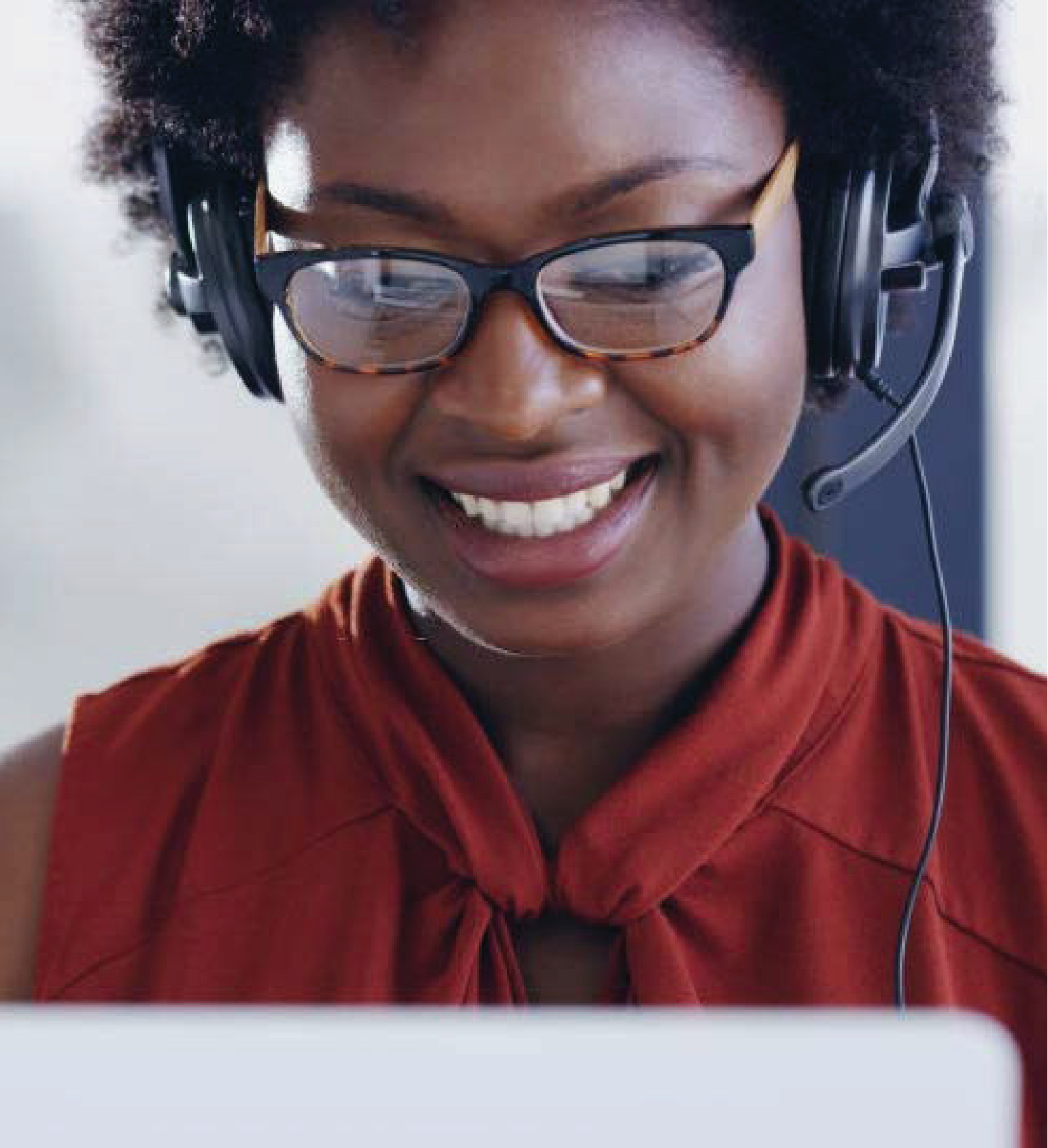
## Technical Consultancy

The average Original is innovative. We believe if we innovate enough, we can continually raise the bar for doing business in Africa. We innovate in an atmosphere of cooperation, hard work, and integrity.

## International Collaborations

We have international partners we collaborate with to develop and train our homegrown talents to meet the needs of our unique business environment

At Origin Group, we believe that the ultimate success of any project hinges chiefly on the quality of the people involved. We have therefore made recruiting and retaining talented personnel a corporate priority.



## Origin Tech Group

---



02 01 460 0800



[www.origingrouppng.com](http://www.origingrouppng.com)



[info@origingrouppng.com](mailto:info@origingrouppng.com)

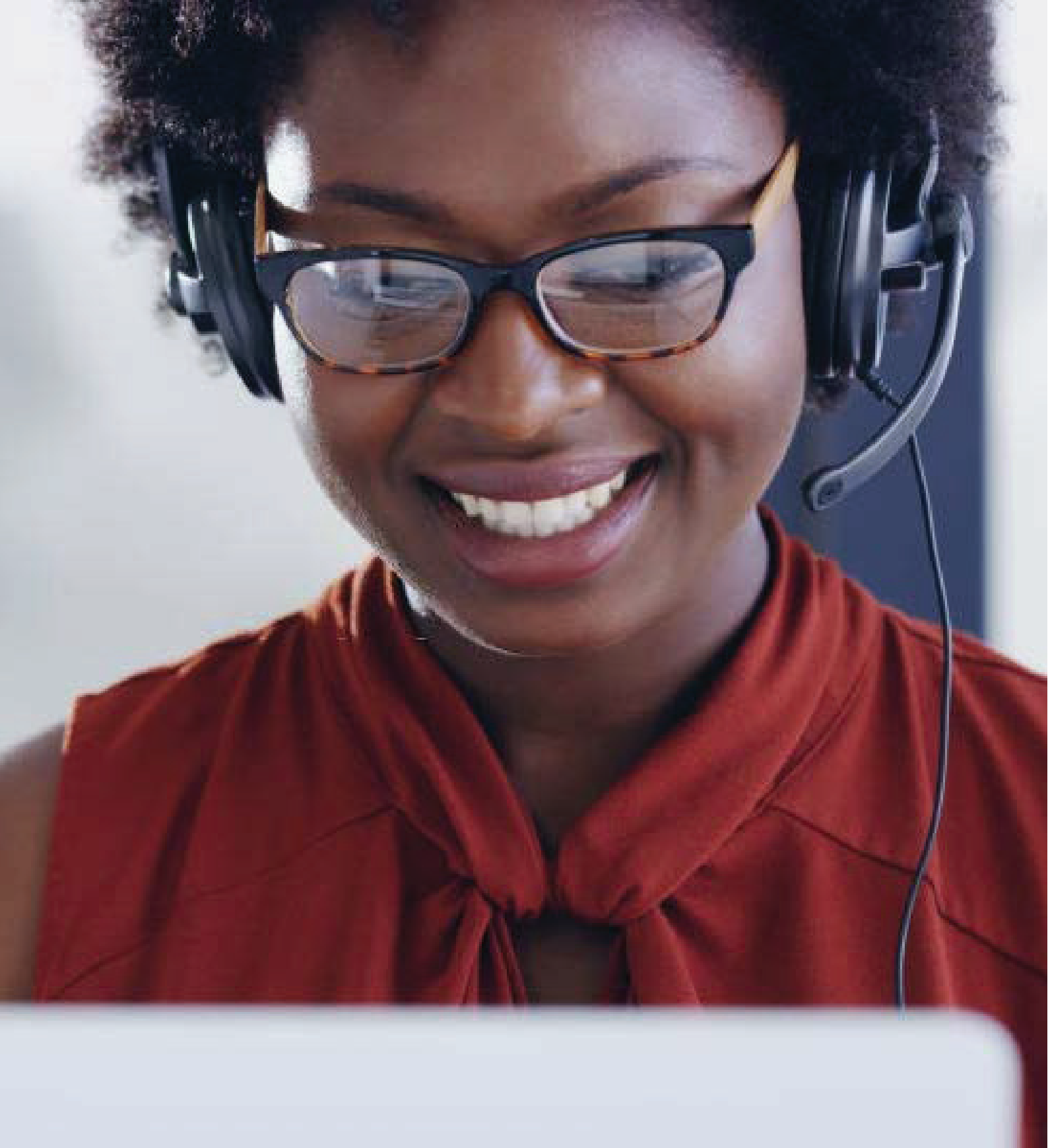


33 Imam Dauda Street,  
off Eric Moore Surulere Lagos



@origintechng





## Origin Tech Group

---



02 01 460 0800



[www.origingrouppng.com](http://www.origingrouppng.com)



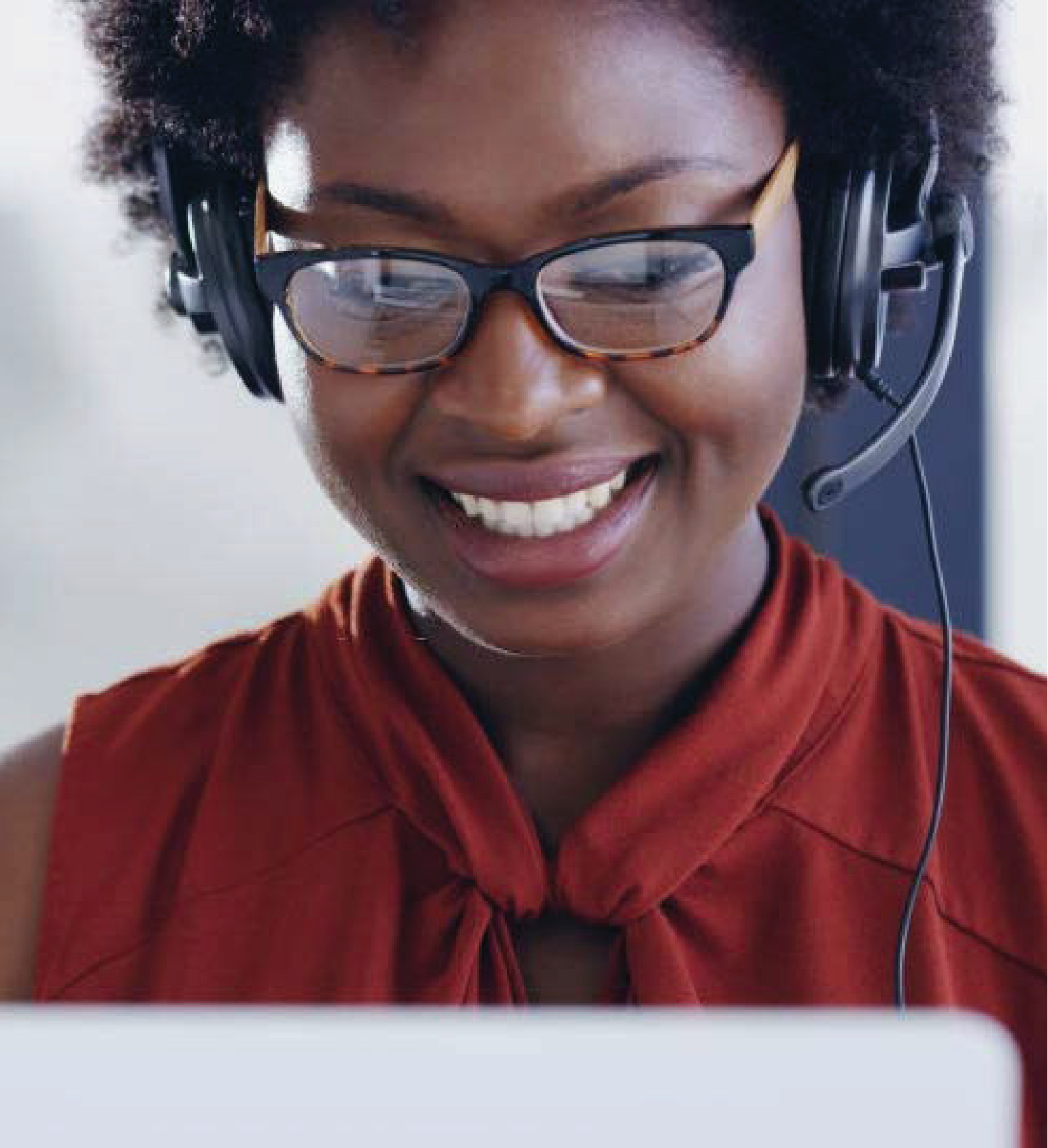
[info@origingrouppng.com](mailto:info@origingrouppng.com)



33 Imam Dauda Street,  
off Eric Moore Surulere Lagos



@origintechng



## Origin Tech Group

---



02 01 460 0800



[www.origingrouppng.com](http://www.origingrouppng.com)



[info@origingrouppng.com](mailto:info@origingrouppng.com)



33 Imam Dauda Street,  
off Eric Moore Surulere Lagos



@origintechng